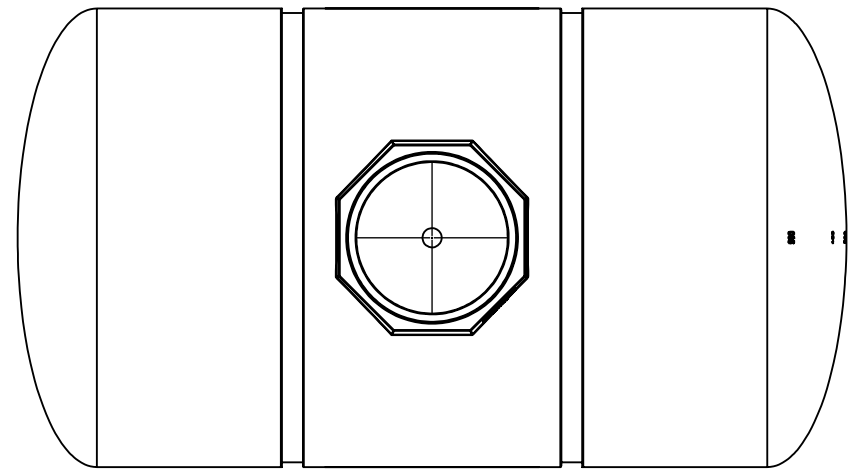
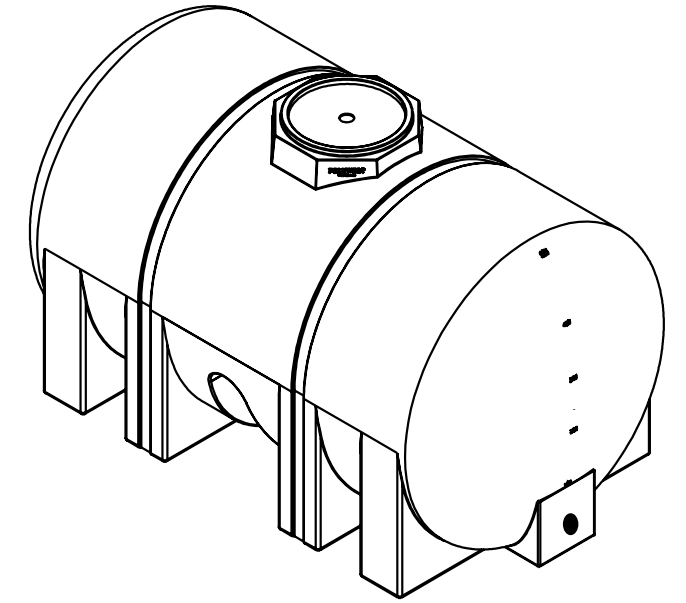


8 7 6 5 4 3 2 1

D

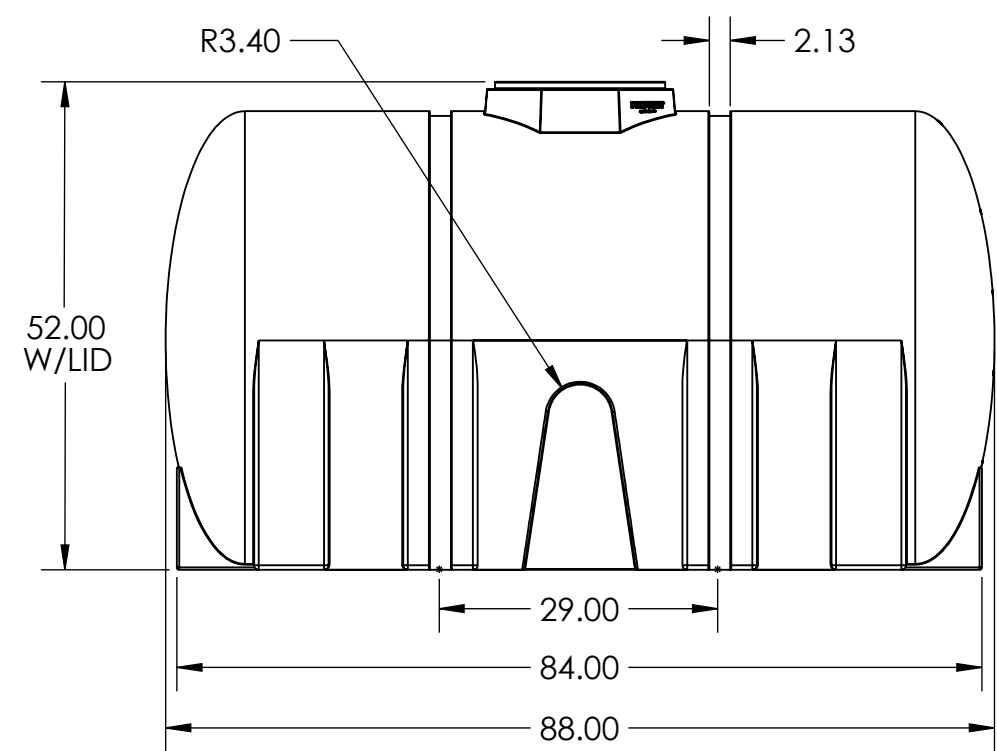


C



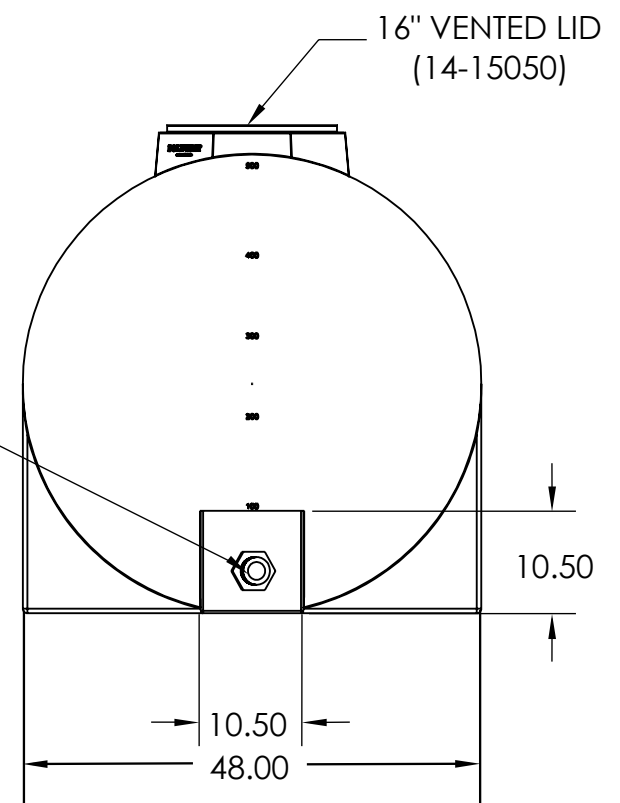
D

B



C

2" BULKHEAD  
2" SIPHON TUBE



B

A

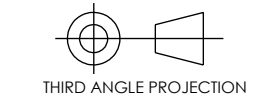
- NOTES:**
- 1) ONE PIECE ROTATIONALLY MOLDED
  - 2) TRANSLUCENT
  - 3) NSF STANDARD 51 POTABLE WATER APPROVED RESIN
  - 4) CALIBRATED IN IMPERIAL GALLONS
  - 5) FIVE YEAR WARRANTY
  - 6) UV STABILIZED

UNLESS OTHERWISE SPECIFIED  
ALL DIMENSIONS ARE IN INCHES

**TOLERANCES:**

FRACTIONAL	±1/32
ONE PLACE DECIMAL	±.120
TWO PLACE DECIMAL	±.060
THREE PLACE DECIMAL	±.030
HOLE DIA.	±.015
BEND RADII	±.030
ANGULAR	±1°

DO NOT SCALE DRAWING



	BY	MM/DD/YY
DRAWN	IDC	11/07/2024
CHECKED		
ENG APPR.		

**PROPRIETARY AND CONFIDENTIAL**

THE INFORMATION CONTAINED IN THIS DRAWING IS THE SOLE PROPERTY OF POLYWEST LTD. ANY REPRODUCTION IN PART OR AS A WHOLE WITHOUT THE WRITTEN PERMISSION OF POLYWEST IS PROHIBITED.

**POLYWEST**

TITLE: Horizontal Leg Tank 500 Imperial Gallon

SIZE	PART NO.	REV
<b>B</b>	<b>HL0500</b>	<b>A</b>
SCALE: 1:24	SOLIDWORKS	SHEET 1 OF 1

8 7 6 5 4 3 2 1