

2016

WATER AND
WASTE MANAGEMENT
CATALOGUE



Since 1991, Polywest Ltd has worked hard, through acquisition and organic growth, to become a key supplier of quality liquid handling products in Canada, the US, Europe and Australia.

WHY CHOOSE POLYWEST

OUR PASSION

At Polywest, we recognize that companies live, and die, by the quality of their customer service. We have made it our mission to offer the most responsive customer service possible to go along with our quality products, industry knowledge and vast reach. When you partner with Polywest, you are getting a commitment not only as your liquid handling products supplier of choice, but also to be the industry's top partner in terms of service, training, responsiveness and value.

OUR PARTNERS

Top manufacturers trust in Polywest to distribute their products. Along with that trust, we hope that our customers also trust us to be their source for liquid handling products. We presently carry one of North America's largest inventories of specialty, name brand liquid handling products in our growing network of locations.

OUR EXPERTISE

Polywest has become a highly capable rotomolding facility, that when coupled with our other proprietary products, has enabled us to set ourselves apart by becoming a comprehensive provider of quality liquid handling products. We are constantly on the lookout for new products and challenges, as well as new and innovative ways to make our existing products even more outstanding.

POLYWEST PRINCIPLES

At Polywest, we understand that your time is valuable. That's why we go out of our way to ensure that your experience with us is positive and productive. As such, we pledge that each of our dealings with you will be guided by these three principles:

CLEAR

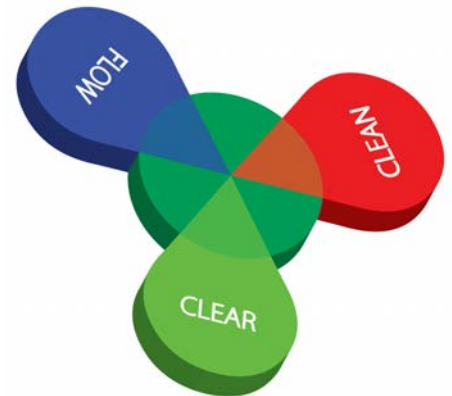
We will make every effort to ensure that pricing and inventory is clearly communicated on request. We will get you answers in a time frame that you can work with. We will tell you if we do not know the answer to your question and we promise to do our best to find the answer and communicate it back to you as soon as possible.

CLEAN

We will hold our employees to the highest ethical standards. We will conduct our business in a way that we can be proud of and we will constantly maintain integrity at all costs. We will create and represent products that have been evaluated by our Product Committees for their high quality, life cycle and value. You can trust that our products are as we represent them in all of our marketing literature.

FLOW

From your first contact, and to our Account Managers, through branch level inside sales and our order desks, to packing, shipping, delivery and invoicing, we promise a quick and seamless flow of customer service that is responsive, accurate and what you would expect from a vendor partner.





2016 WATER AND WASTEWATER CATALOGUE

TABLE OF CONTENTS

TANKS AND ACCESSORIES.....	3	INSULATED TANKS	14
Above Ground Cistern & Holding Tanks	3	PUMPS.....	15
Low Profile Below Ground Cistern & Holding Tanks.....	3	Submersible Effluent	16
Spherical Pump Chamber Tanks	4	Submersible Sewage.....	16
Bruiser Septic Tanks.....	4	Submersible Sump	17
Indoor Potable Water Tanks	4	Residential Grinder.....	17
Poly Septic and Holding Tanks	5	Shallow Well	17
Boa Tape Extra Grip Infiltration Sealing Tape.....	5	Pressure Tanks.....	17
Fibreglass Ball Tanks.....	6	PUMP ACCESSORIES	18
Ontario-Approved Fibreglass Tanks	6	Alarms	18
Fibreglass Vertical Sectional Water & Waste Tanks	7	Float Switches	19
Fibreglass Water Holding Tanks and Cisterns	7	FIELD COMPONENTS	19
Fibreglass Waste Water Tanks - 5' DIA	8	Infiltrator.....	19
Fibreglass Waste Water Tanks - 6' AND 8' DIA	9	PVC Drainline Pipe.....	19
Fibreglass Tank Lids.....	10	Polypropylene Pipe.....	19
Fibreglass Man-Way Extensions	10	SUMP PITS	20
Bonding of Man-Way Extensions	10	Westland Sump Pits	20
EF-4 Effluent Filter.....	11	Sump Pits and Sewage Lift Stations	20
Polyethylene Tank Accessories	11	Ribbed Cylindrical Tanks	20
BELOW GROUND FIBREGLASS TANKS.....	12	Sabre Sump Pits.....	21
CUSTOM PROJECTS:		Radon Mitigation System and Service.....	22
RESIDENTIAL AND COMMERCIAL	13		

FOLLOW POLYWEST :



POLYWEST IS PLEASED TO PRESENT OUR 2016 WASTEWATER CATALOGUE.
PLEASE TAKE A MOMENT TO READ AND FAMILIARIZE YOURSELF WITH OUR TERMS & CONDITIONS.



2016 WATER AND WASTEWATER CATALOGUE

TERMS AND CONDITIONS

NEW ACCOUNTS:

Polywest welcomes new accounts. The link to our credit application can be found in the information library found at www.polywest.ca. Orders will be shipped C.O.D. pending credit approval.

CREDIT TERMS:

Only approved credit holders will be permitted credit privileges. C.O.D. or NET 30 Days is subject to prior credit approval. Interest will be charged on unpaid balances over 30 Days at a rate of 1.5% per month. Any credit issued to your account must be used within 6 months.

PAYMENT:

We accept cheques, Visa, MasterCard and Interac as forms of payment. Account holders wishing to pay their accounts with credit card will be assessed a 2% surcharge if the account is over 30 Days at the time of payment. All non-credit orders require a credit card at the time of order and will be charged when available stock is allocated. Orders over \$5000 will be subject to a 3% surcharge should the customer wish to pay with a credit card.

MINIMUM ORDER:

Polywest reserves the right to enforce a \$50.00 minimum order. Orders accepted under this amount may be subject to a \$10.00 handling charge or loss of discount.

SHIPPING:

All goods are F.O.B. Polywest Ltd. Please state how shipments are to be made on all correspondence.

RETURNS:

All returns of new and unused goods must have prior approval from Polywest as well as a Returned Merchandise Agreement (RMA). Returned goods must be shipped prepaid and may be subject to a restocking fee. Special order items are not refundable. Returned goods should be in their original packaging whenever possible. Please contact your Account Manager for a full explanation of our returned goods policy.

NORWESCO WARRANTY INFORMATION:

All Premium Weight (1.5 sg) NORWESCO tanks carry a 3-year warranty. Heavy Duty Weight (1.9 sg) NORWESCO tanks carry a 5-year warranty. NORWESCO Premium Weight tanks are rated for 12.5 pounds per US gallon (15 lbs per IMP gallon). NORWESCO Heavy Duty Weight tanks are rated for 15.75 pounds per US gallon (19 lbs per IMP gallon). Should a defect appear within the warranty period, NORWESCO will supply a new, equivalent tank in replacement thereof. NORWESCO's liability is limited to the value of the tank itself and specifically excludes the cost of installation and/or removal or consequential damages. Always check with your chemical supplier or Polywest for chemical resistance information.

REMAINING PRODUCT WARRANTIES:

All other items carry the manufacturer's stated warranty. Warranty claims must be approved by Polywest prior to the returning of product. Decisions made by product manufacturers with respect to warranty claims will be final. ALL freight charges incurred on returned warranty items are the customers responsibility.

LOSS OR DAMAGE:

Merchandise damaged in transit is the responsibility of the carrier. Polywest's liability for damage ceases when the carrier receives and signs for the shipment at our dock. Should you choose to accept a damaged shipment, be sure to note any damage in transit on the bill of lading before signing it. Failure to do so relieves the carrier of any liability. Contact the carrier as well as Polywest immediately to inform them of any damage.

POLYWEST PROPRIETARY PRODUCTS WARRANTY

Polywest Proprietary products are products exclusively manufactured or distributed by Polywest, such as the Handler. Please see our website for a complete list. These products are guaranteed to be free of defects and carry a one-year warranty starting on date of sale.

**** SPECIFICATIONS AND PRODUCT AVAILABILITY
SUBJECT TO CHANGE WITHOUT NOTICE ****



ABOVE GROUND CISTERN AND HOLDING TANKS

The 180 to 2100 Imperial gallon low-profile tanks are ideal for storage in areas where height is an important consideration. The low-profile tanks are designed to fit under a cottage or cabin and the strong, deep ribs create extra strength. They may also be used as stationary water storage or holding tanks where applicable. Some tanks may also be available in black - please ask your Polywest representative directly for a complete list.

ITEM #	CAPACITY		DIMENSIONS (INCHES)			FILL OPENING (INCHES)	TANK FITTING (INCHES)	LIST PRICES	
	IMP GAL	LTR	L	W	D			FOB MB	FOB SK/AB
MLP180	180	818	72	48	20	16	-	\$499.00	\$499.00
☞ 44181	250	1137	96	60	15	16		\$586.13	\$627.16
40964	300	1364	96	48	25	16	-	\$691.93	\$740.37
43123	500	2273	98	72	28.5	16	2	\$1,112.71	\$1,112.71
☞ 44182	500	2273	96	60	30	16	-	\$945.82	\$1,012.03
☞ 44192	525	2387	82	88	24	16		\$925.57	\$990.36
☞ 44185	750	3410	96	60	44	16	-	\$1,157.42	\$1,238.44
☞ 44194	780	3546	119	88	24	16		\$1,250.87	\$1,338.43
☞ 44187	1000	4546	152	88	24	16	-	\$1,569.19	\$1,679.03
42890	1075	4887	126	84	36	16	2	\$1,921.95	\$1,832.14
☞ 40966	1150	5228	149	89	34	16	-	\$2,292.76	\$2,453.25
☞ 44174	1320	6001	152	91	35	16		\$2,408.99	\$2,577.62
42891	1325	6024	126	84	42	16	2	\$2,360.90	\$2,250.00
☞ 40969	1700	7728	149	89	46	16	-	\$3,167.43	\$3,389.16
☞ 44190	1720	7819	152	88	40	16		\$2,801.29	\$2,997.38
☞ 44178	1950	8865	152	91	49	16		\$3,397.00	\$3,634.79
44335	2100	9547	90	157	51	16	2	\$3,369.60	\$3,212.14

LOW PROFILE BELOW GROUND CISTERN AND HOLDING TANKS

Our below ground cistern & holding tanks feature the same rugged design found in our above ground tanks and are light weight for ease of transportation and installation. Our polyethylene below ground tanks use FDA approved resins for use in drinking water applications. All of our below ground tanks should be kept 1/4 full after installation.



ITEM #	CAPACITY		DIMENSIONS (INCHES)			FILL OPENING (INCHES)	BURIAL DEPTH (INCHES)	LIST PRICES	
	IMP GAL	LTR	L	W	D			FOB MB	FOB SK/AB
40965	300	1364	96	48	46	16	18	\$882.35	\$944.12
☞ 44184	500	2273	96	60	30	16	30	\$1,235.44	\$1,321.92
☞ 44186	750	3410	96	60	44	30	30	\$1,524.45	\$1,631.17
☞ 40967	1150	5228	149	89	64	30	24	\$2,964.02	\$3,171.50
☞ 44176	1320	6001	152	91	35	30	30	\$3,094.79	\$3,311.42
☞ 40970	1700	7728	149	89	76	30	24	\$3,850.32	\$4,119.84
☞ 44180	1950	8865	152	91	49	30	30	\$4,082.79	\$4,368.59



SPHERICAL PUMP CHAMBER TANKS

Our 270 and 416 Imperial gallon spheres are designed to be used as a holding tank or a pump tank. Unlike our ribbed septic and holding tanks, these tanks may remain empty while in the ground.

These tanks are furnished with manhole covers. Include a molded-in elevated pump stand on the bottom of the tank.

ITEM #	CAPACITY		DIMENSIONS (INCHES)		FILL OPENING (IN)	BURIAL DEPTH	LIST PRICES		
	IMP GAL	LTR	DIA	H			FOB MB	FOB SK	FOB AB
42126	270	1227	54	53	20"	24"	\$942.88	\$960.17	\$1,003.42
40856	458	2082	64	67	20"	24"	\$1,511.69	\$1,539.43	\$1,608.77

BRUISER SEPTIC TANKS

The BRUISER may be used as a septic or holding tank, a pump chamber or a potable water tank and displays the same features as our standard septic tanks.

BRUISER tanks should be filled 1/4 full prior to installation. No special backfill is needed, soil may be used providing it is devoid of any large obstructions, such as tree roots.

**Indicates this is a single compartment tank



ITEM #	CAPACITY		DIMENSIONS (INCHES)			FILL OPENING (INCHES)	BURIAL DEPTH	LIST PRICES		
	IMP GAL	LTR	L	W	D			FOB MB	FOB SK	FOB AB
41993	830	3773	102	60	62	2 - 20"	24"	\$1,953.42	\$1,953.42	\$1,862.14
**43073	830	3773	102	60	62	2 - 20"	24"	\$1,773.59	\$1,773.59	\$1,690.72
42125	1250	5683	133	55	70	2 - 20"	24"	\$3,257.21	\$3,257.21	\$3,105.00
**42654	1250	5683	133	65	70	2 - 20"	24"	\$3,032.42	\$3,032.42	\$2,890.72



INDOOR POTABLE WATER TANKS

These NORWESCO tanks have been specifically designed with residential, commercial and cottage applications in mind. Each tank's dimensions allow it to fit through conventional doorways and stairwells.

Suitable sized bulkhead fittings can be installed in numerous locations on each tank. The 260 and 350 Imperial gallon models come with a steel support frame.

ITEM #	CAPACITY		DIMENSIONS (INCHES)			FILL OPENING (INCHES)	TANK FITTING	LIST PRICES		
	IMP GAL	LTR	L	W	D			FOB MB	FOB SK	FOB AB
41205	115	523	60	24	24	16"	-	\$424.85	\$424.85	\$405.00
42337	208	946	62	29	40	16"	1-1/4"	\$771.29	\$785.44	\$820.82
41199	230	1046	60	24	48	16"	-	\$1,045.27	\$1,045.27	\$996.43
41869	250	1137	62	29	49	16"	1-1/4"	\$993.88	\$1,012.12	\$1,057.71
41190	330	1500	83	32	44	16"	-	\$1,436.41	\$1,436.41	\$1,369.29
41241	330	1500	62	29	67.5	16"	1-1/4"	\$971.09	\$971.09	\$925.71
41015	350	1591	62	29.5	63	16"	-	\$1,264.44	\$1,264.44	\$1,205.36
43616	417	1896	74	31	70	16"	1-1/4"	\$1,513.22	\$1,540.97	\$1,610.39
44310	625	2841	82	35	85	16"	2"	\$2,335.53	\$2,378.37	\$2,485.51
44045	833	3787	92	40	89	16"	2"	\$3,182.55	\$3,240.95	\$3,386.98



POLY HOLDING BALL TANKS

Built with the highest grade materials and by experienced people, our tanks are built to stand up to anything you throw at them.

Features:

- 78" diameter ball tanks
- 30" manway with bolt on cover
- 8" access lid
- Manway extensions mechanically attached
- Fasteners and sealant are included.
- 4" heavy duty rubber seal included for inlet pipe
- Tie down lugs on each tank
- Made from durable, corrosion resistant polyethylene.

HOLDING TANKS			
MODELS CAT #	CAPACITY		BURIAL DEPTH
	IMP GAL	LTR	
SBT-880HP2	880	4001	2 feet
SBT-880HP4	880	4001	4 feet
SBT-880HP7	880	4001	7 feet

BOA TAPE EXTRA GRIP INFILTRATION SEALING TAPE

No Primer and No Torch...Just Peel, Tape, Roll and Go! Boa-Tape™ is a tape system designed for sealing joints against ground water infiltration, with concrete, steel and polyethylene. Used to encapsulate manholes, vaults and protect pipelines, this 50 mils elastomeric mastic, in combination with 15 mils of a woven polypropylene, makes this pressure sensitive tape extra sticky. Boa-Tape ships in 150 ft rolls and can be supplied in 12", 6" and 4" widths.



Applications

- Manhole encapsulation/sealing
- Pipelines
- Repair and rehabilitation
- Step-down joints
- Square/Rectangular vaults
- Septic tanks/vaults
- Corrosion protection



Benefits/Features

1. High Bonding Force
 - Accommodates ground movement.
 - Seals against ground water infiltration.
2. High Impact and Penetration Resistance
 - Toughness to resist soil stress.
3. Impermeable
 - Provides corrosion protection.
 - Extends structure life.
4. No Special Tools Required for Installation
 - Quick and easy installation.
 - No primer required
 - No torch required to adhere tape

PART NUMBER	DESCRIPTION	WIDE (IN)	LENGTH (FEET)	PRICE
BT12-150	BOA TAPE 12" X 150'	12"	150	PLEASE CALL
BT04-150	BOA TAPE 4" X 150'	4"	150	\$3.04
BT06-150	BOA TAPE 6" X 150'	6"	150	\$5.28



FIBREGLASS BALL TANKS

Our line of fibreglass ball tanks are the only tanks on the market made with 100% Pure resin and glass, no fillers.

Our shallow burial models come complete with 30" x 12" bonded man-ways, and are rated for 24" of earth cover. Our deep burial models (indicated by the "2.14" in the part item number) come complete with 30" x 36" bonded man-ways and are rated for 2.14 metres of earth cover.



ITEM #	CAPACITY		DIMENSIONS (IN)		BURIAL DEPTH	FILL OPENING	TANK STYLE	LIST PRICES		
	IMP GAL	LTR	DIA	H				FOB MB	FOB SK	FOB AB
HGN3410H.6B	750	3410	85"	96"	24"	30"	HOLDING	\$2,080.23	\$2,365.76	\$2,406.55
HGN3410H2.14B	750	3410	85"	120"	84"	30"	HOLDING	\$2,518.24	\$2,863.88	\$2,913.26
HGN3410P.6B	750	3410	85"	96"	24"	30"	PUMP-OUT	\$2,495.82	\$2,838.39	\$2,887.33
HGN3410P2.14B	750	3410	85"	120"	84"	30"	PUMP-OUT	\$2,858.24	\$3,250.55	\$3,306.59
HGN3410T.6B	750	3410	85"	96"	24"	30"	TRICKLE	\$2,495.82	\$2,838.39	\$2,887.33
HGN3410T2.14B	750	3410	85"	120"	84"	30"	TRICKLE	\$2,751.76	\$3,129.45	\$3,183.41
HGN4546H.6	1000	4546	88"	96"	24"	30"	HOLDING	\$2,851.82	\$3,243.25	\$3,299.16
HGN4546H2.14	1000	4546	88"	96"	84"	30"	HOLDING	\$3,015.16	\$3,429.01	\$3,488.13
HGN4546P.6	1000	4546	88"	96"	24"	30"	PUMP-OUT	\$3,520.47	\$4,003.67	\$4,072.70
HGN4546P2.14	1000	4546	88"	96"	84"	30"	PUMP-OUT	\$3,392.53	\$3,858.17	\$3,924.69



ONTARIO APPROVED FIBREGLASS TANKS

Made from the same 100% Pure resin and glass as our waste water and ball tanks, these tanks conform to the Ontario Government's requirements for waste water tanks. Each comes complete with two access openings as well as 4" inlet & 1-1/4" or 4" outlet. Rated for 24" of earth cover. ***These tanks come with the larger 200 gallon pump chamber.*



ITEM #	CAPACITY		DIMENSIONS (IN)		FILL OPENING (INCHES)	TANK STYLE	LIST PRICES		
	IMP GAL	LTR	DIA	L			FOB MB	FOB SK	FOB AB
FGOON3636-5P.6	800	3637	64"	127"	2 - 24"	PUMP-OUT	\$4,023.96	\$4,576.26	\$4,655.16
**FGOON3636-5P.62	800	3637	64"	143"	2 - 24"	PUMP-OUT	\$3,792.31	\$4,312.82	\$4,387.18
FGOON3636-5T.6	800	3637	64"	116"	2 - 24"	TRICKLE	\$3,579.34	\$4,070.62	\$4,140.81
FGOON4546-5P.6	1000	4546	64"	151"	2 - 24"	PUMP-OUT	\$4,429.34	\$5,037.29	\$5,124.14
**FGOON4546-5P.62	1000	4546	64"	165"	2 - 24"	PUMP-OUT	\$4,185.71	\$4,760.22	\$4,842.30
FGOON4546-5T.6	1000	4546	64"	140"	2 - 24"	TRICKLE	\$4,190.22	\$4,765.35	\$4,847.51
FGOON5455-5P.6	1200	5455	64"	175"	2 - 24"	PUMP-OUT	\$5,354.16	\$6,089.04	\$6,194.03
**FGOON5455-5P.62	1200	5455	64"	193"	2 - 24"	PUMP-OUT	\$5,359.67	\$6,095.31	\$6,200.40
FGOON5455-5T.6	1200	5455	64"	164"	2 - 24"	TRICKLE	\$5,126.15	\$5,829.74	\$5,930.26
FGOON6364-5P.6	1400	6365	64"	199"	2 - 24"	PUMP-OUT	\$5,515.57	\$6,272.60	\$6,380.75
**FGOON6364-5P.62	1400	6365	64"	214"	2 - 24"	PUMP-OUT	\$5,539.22	\$6,299.51	\$6,408.12
FGOON6364-5T.6	1400	6365	64"	188"	2 - 24"	TRICKLE	\$5,282.52	\$6,007.57	\$6,111.15
**FGOON7273-5P.62	1600	7274	64"	237"	2 - 24"	PUMP-OUT	\$6,092.26	\$6,928.45	\$7,047.91
FGOON7273-5T.6	1600	7274	64"	212"	2 - 24"	TRICKLE	\$5,818.86	\$6,617.52	\$6,731.62
FOON7273-5P.6	1600	7274	64"	223"	2 - 24"	PUMP-OUT	\$5,021.54	\$5,710.77	\$5,809.23

FIBREGLASS VERTICAL SECTIONAL WATER AND WASTE TANKS

Our freestanding fiberglass above ground storage tanks are made for locations where below ground burial is not possible. For indoor use these tanks can be moved through standard doorways then assembled. Each tank comes with a 16" lid installed.

ITEM #	CAPACITY		DIMENSIONS (INCHES)		LIST PRICES		
	IMP GAL	LTR	DIA	H	FOB MB	FOB SK	FOB AB
CSVN1135-H5AG	250	1137	56"	28"	\$1,030.49	\$1,171.93	\$1,192.14
CSVN2270-H5AG	500	2273	56"	56"	\$1,581.74	\$1,798.85	\$1,829.86
CSVN3410-H5AG	750	3410	56"	81"	\$2,183.85	\$2,483.60	\$2,526.42
CSVN4546-H5AG	1000	4546	56"	106"	\$2,711.43	\$3,083.60	\$3,136.76



FIBREGLASS WATER HOLDING TANKS AND CISTERNS

Made from the same 100% Pure resin and glass as all of our fiberglass tanks, our line of water holding tanks are second to none.

These single chamber tanks have an FDA accepted interior Gel coat to insure consistent potable water quality. Rated for 36" of earth cover, heavy duty models can be special ordered for up to 84" of earth cover. Tanks come with 2" outlet.



ITEM #	CAPACITY		DIMENSIONS (INCHES)		FILL OPENING	TANK STYLE	LIST PRICES		
	IMP GAL	LTR	DIA	L			FOB MB	FOB SK	FOB AB
HON4546W.9	1000	4546	64"	124"	30"	WATER	\$3,521.43	\$4,004.76	\$4,073.81
HON5682W.9	1250	5683	64"	150"	30"	WATER	\$4,045.23	\$4,600.46	\$4,679.78
HON6820W.9	1500	6819	64"	176"	30"	WATER	\$4,169.27	\$4,741.53	\$4,823.28
HON7955W.9	1750	7956	64"	200"	30"	WATER	\$5,164.08	\$5,872.87	\$5,974.13
HON9092-6W.9	2000	9092	76"	164"	30"	WATER	\$7,474.37	\$8,500.27	\$8,646.82
HON9092W.9	2000	9092	64"	224"	30"	WATER	\$5,581.98	\$6,348.13	\$6,457.58
HON11360-6W.9	2500	11365	76"	198"	30"	WATER	\$8,787.69	\$9,993.85	\$10,166.15
HON13640-6W.9	3000	13638	76"	232"	30"	WATER	\$8,808.15	\$10,017.11	\$10,189.82
HON13640-8W.9	3000	13638	102"	156"	30"	WATER	\$8,210.44	\$9,337.36	\$9,498.35
HON18185-8W.9	4000	18184	102"	197"	30"	WATER	\$10,700.66	\$12,169.38	\$12,379.19
HON22730-8W.9	5000	22730	102"	238"	30"	WATER	\$14,388.35	\$16,363.22	\$16,645.35
HON27275-8W.9	6000	27277	102"	278"	30"	WATER	\$16,506.81	\$18,772.45	\$19,096.12
HON31820-8W.9	7000	31823	102"	314"	30"	WATER	\$18,978.35	\$21,583.22	\$21,955.35
HON36370-8W.9	8000	36369	102"	357"	30"	WATER	\$21,371.43	\$24,304.76	\$24,723.81
HON40915-8W.9	9000	40915	102"	397"	30"	WATER	\$24,784.51	\$28,186.30	\$28,672.27
HON45460-8W.9	10000	45461	102"	436"	30"	WATER	\$26,392.97	\$30,015.53	\$30,533.04
HON50000-8W.9	11000	50007	102"	474"	30"	WATER	\$29,792.97	\$33,882.20	\$34,466.37
HON54550-8W.9	12000	54553	102"	512"	30"	WATER	\$32,025.38	\$36,421.03	\$37,048.97

FIBREGLASS WASTE WATER TANKS - 5FT. DIAMETER

Our line of fiberglass waste water tanks are made for 100% Pure resin and glass no fillers. Each tank comes complete with a 30" manhole and lid.



- Holding tanks come with one 4" inlet fitting.
- Pump-Out tanks come with one 4" inlet and one 2" outlet fitting.
- Trickle tanks come with one 4" inlet fitting and one 4" outlet fitting.

ITEM #	BURIAL TYPE	CAPACITY		DIMENSIONS (INCHES)		TANK STYLE	LIST PRICES		
		IMP GAL	LTR	DIA	L		FOB MB	FOB SK	FOB AB
FGHON4546H2.14	DEEP	1000	4546	64	124	HOLDING	\$3,512.09	\$3,994.14	\$4,063.00
FGHON4546P2.14	DEEP	1000	4546	64	124	PUMP-OUT	\$3,868.90	\$4,399.93	\$4,475.79
FGHON4546T2.14	DEEP	1000	4546	64	124	TRICKLE	\$3,868.90	\$4,399.93	\$4,475.79
FGHON5682H2.14	DEEP	1250	5683	64	150	HOLDING	\$3,926.81	\$4,465.79	\$4,542.78
FGHON5682P2.14	DEEP	1250	5683	64	150	PUMP-OUT	\$4,311.65	\$4,903.44	\$4,987.99
FGHON5682T2.14	DEEP	1250	5683	64	150	TRICKLE	\$4,311.65	\$4,903.44	\$4,987.99
FGHON6820H2.14	DEEP	1500	6819	64	176	HOLDING	\$4,302.31	\$4,892.82	\$4,977.18
FGHON6820P2.14	DEEP	1500	6819	64	176	PUMP-OUT	\$4,552.36	\$5,177.19	\$5,266.45
FGHON6820T2.14	DEEP	1500	6819	64	176	TRICKLE	\$4,552.36	\$5,177.19	\$5,266.45
FGHON7955H2.14	DEEP	1750	7956	64	200	HOLDING	\$5,270.96	\$5,994.42	\$6,097.77
FGHON7955P2.14	DEEP	1750	7956	64	200	PUMP-OUT	\$5,597.34	\$6,365.61	\$6,475.36
FGHON7955T2.14	DEEP	1750	7956	64	200	TRICKLE	\$5,597.34	\$6,365.61	\$6,475.36
FGHON9092P2.14	DEEP	2000	9092	64	224	PUMP-OUT	\$5,806.15	\$6,603.08	\$6,716.92
FGHON9092T2.14	DEEP	2000	9092	64	224	TRICKLE	\$5,806.15	\$6,603.08	\$6,716.92
FGHON9092H2.14	DEEP	2000	9092	64	224	HOLDING	\$5,602.53	\$6,371.50	\$6,481.36
FGHON4546H.6A	SHALLOW	1000	4546	64	124	HOLDING	\$2,648.36	\$3,011.86	\$3,063.79
FGHON4546P.6	SHALLOW	1000	4546	64	124	PUMP-OUT	\$2,648.36	\$3,011.86	\$3,063.79
FGHON4546T.6	SHALLOW	1000	4546	64	124	TRICKLE	\$3,394.02	\$3,859.87	\$3,926.42
FGHON5682H.6	SHALLOW	1250	5683	64	150	HOLDING	\$3,768.68	\$4,285.95	\$4,359.84
FGHON5682P.6	SHALLOW	1250	5683	64	150	PUMP-OUT	\$4,114.63	\$4,679.38	\$4,760.06
FGHON5682T.6A	SHALLOW	1250	5683	64	150	TRICKLE	\$4,114.63	\$4,679.38	\$4,760.06
FGHON6820H.6	SHALLOW	1500	6819	64	176	HOLDING	\$3,895.95	\$4,430.68	\$4,507.08
FGHON6820P.6	SHALLOW	1500	6819	64	176	PUMP-OUT	\$4,168.06	\$4,740.15	\$4,821.87
FGHON6820T.6	SHALLOW	1500	6819	64	176	TRICKLE	\$4,401.44	\$5,005.55	\$5,091.86
FGHON7955H.6	SHALLOW	1750	7956	64	200	HOLDING	\$4,998.37	\$5,684.42	\$5,782.43
FGHON7955P.6	SHALLOW	1750	7956	64	200	PUMP-OUT	\$5,232.96	\$5,951.21	\$6,053.82
FGHON7955T.6	SHALLOW	1750	7956	64	200	TRICKLE	\$5,232.96	\$5,951.21	\$6,053.82
FGHON9092H.6	SHALLOW	2000	9092	64	224	HOLDING	\$5,304.02	\$6,032.03	\$6,136.03
FGHON9092P.6	SHALLOW	2000	9092	64	224	PUMP-OUT	\$5,583.45	\$6,349.80	\$6,459.28
FGHON9092T.6	SHALLOW	2000	9092	64	224	TRICKLE	\$5,583.45	\$6,349.80	\$6,459.28

ALL OF OUR FIBREGLASS TANKS CAN BE CUSTOM ORDERED WITH BONDED MAN-WAY EXTENSIONS FOR A NO-SEAM INSTALLATION. FOR MORE DETAILS, PLEASE CONTACT POLYWEST AT 1.855.765.9937



FIBREGLASS WASTE WATER TANKS - 6 AND 8FT. DIAMETER

Our line of fibreglass waste water tanks are made for 100% pure resin and glass, no fillers. Each tank comes with a 30" man-way access and lid. All of our 6ft. and 8ft. diameter tanks are rated for 84" of earth cover. Holding tanks come with one 4" inlet fitting. Pump-Out tanks come with one 4" inlet and one 2" outlet fitting. Trickle tanks come with one 4" inlet and one 4" outlet fitting.



ITEM #	CAPACITY		DIMENSIONS (INCHES)		TANK STYLE	LIST PRICES		
	IMP GAL	LTR	DIA	L		FOB MB	FOB SK	FOB AB
FGHON9092-6H2.14	2000	9092	76	164	HOLDING	\$6,530.92	\$7,427.32	\$7,555.38
FGHON9092-6P2.14	2000	9092	76	164	PUMP-OUT	\$7,764.45	\$8,830.15	\$8,982.40
FGHON9092-6T2.14	2000	9092	76	164	TRICKLE	\$7,764.45	\$8,830.15	\$8,982.40
FGHON11360-6H2.14	2500	11365	76	198	HOLDING	\$8,554.18	\$9,728.28	\$9,896.01
FGHON11360-6P2.14	2500	11365	76	198	PUMP-OUT	\$9,436.12	\$10,731.27	\$10,916.30
FGHON11360-6T2.14	2500	11365	76	198	TRICKLE	\$9,436.12	\$10,731.27	\$10,916.30
FGHON13640-6H2.14	3000	13638	76	232	HOLDING	\$9,701.40	\$11,032.96	\$11,223.19
FGHON13640-6P2.14	3000	13638	76	232	PUMP-OUT	\$9,975.82	\$11,345.05	\$11,540.66
FGHON13640-6T2.14	3000	13638	76	232	TRICKLE	\$9,975.82	\$11,345.05	\$11,540.66
FGHON13640-8H2.14	3000	13638	102	156	HOLDING	\$8,152.53	\$9,271.50	\$9,431.36
FGHON13640-8P2.14	3000	13638	102	156	PUMP-OUT	\$8,768.54	\$9,972.07	\$10,144.00
FGHON13640-8T2.14	3000	13638	102	156	TRICKLE	\$8,768.54	\$9,972.07	\$10,144.00
FGHON18185-8H2.14	4000	18184	102	197	HOLDING	\$10,627.80	\$12,086.52	\$12,294.91
FGHON18185-8P2.14	4000	18184	102	197	PUMP-OUT	\$11,956.04	\$13,597.07	\$13,831.50
FGHON18185-8T2.14	4000	18184	102	197	TRICKLE	\$11,956.04	\$13,597.07	\$13,831.50
FGHON22730-8H2.14	5000	22730	102	238	HOLDING	\$14,063.30	\$15,993.55	\$16,269.30
FGHON22730-8P2.14	5000	22730	102	238	PUMP-OUT	\$14,466.81	\$16,452.45	\$16,736.12
FGHON22730-8T2.14	5000	22730	102	238	TRICKLE	\$14,466.81	\$16,452.45	\$16,736.12
FGHON27275-8H2.14	6000	27277	102	278	HOLDING	\$16,938.35	\$19,263.22	\$19,595.35
FGHON27275-8P2.14	6000	27277	102	278	PUMP-OUT	\$17,354.95	\$19,737.00	\$20,077.29
FGHON27275-8T2.14	6000	27277	102	278	TRICKLE	\$17,354.95	\$19,737.00	\$20,077.29
FGHON31820-8H2.14	7000	31823	102	314	HOLDING	\$18,942.86	\$21,542.86	\$21,914.29
FGHON31820-8P2.14	7000	31823	102	314	PUMP-OUT	\$19,357.58	\$22,014.51	\$22,394.07
FGHON31820-8T2.14	7000	31823	102	314	TRICKLE	\$19,357.58	\$22,014.51	\$22,394.07
FGHON36370-8H2.14	8000	36369	102	357	HOLDING	\$20,360.77	\$23,155.38	\$23,554.62
FGHON36370-8P2.14	8000	36369	102	357	PUMP-OUT	\$20,734.40	\$23,580.29	\$23,986.85
FGHON36370-8T2.14	8000	36369	102	357	TRICKLE	\$20,734.40	\$23,580.29	\$23,986.85
FGHON40915-8H2.14	9000	40915	102	397	HOLDING	\$23,790.66	\$27,056.04	\$27,522.53
FGHON40915-8P2.14	9000	40915	102	397	PUMP-OUT	\$24,001.76	\$27,296.12	\$27,766.74
FGHON40915-8T2.14	9000	40915	102	397	TRICKLE	\$24,001.76	\$27,296.12	\$27,766.74
FGHON45460-8H2.14	10000	45461	102	436	HOLDING	\$25,107.69	\$28,553.85	\$29,046.15
FGHON45460-8P2.14	10000	45461	102	436	PUMP-OUT	\$26,196.81	\$29,792.45	\$30,306.12
FGHON45460-8T2.14	10000	45461	102	436	TRICKLE	\$26,196.81	\$29,792.45	\$30,306.12
FGHON50000-8H2.14	11000	50007	102	474	HOLDING	\$27,962.20	\$31,800.15	\$32,348.42
FGHON50000-8P2.14	11000	50007	102	474	PUMP-OUT	\$28,492.75	\$32,403.52	\$32,962.20
FGHON50000-8T2.14	11000	50007	102	474	TRICKLE	\$28,492.75	\$32,403.52	\$32,962.20
FGHON54550-8H2.14	12000	54553	102	512	HOLDING	\$30,454.29	\$34,634.29	\$35,231.43
FGHON54550-8P2.14	12000	54553	102	512	PUMP-OUT	\$30,768.13	\$34,991.21	\$35,594.51
FGHON54550-8T2.14	12000	54553	102	512	TRICKLE	\$30,768.13	\$34,991.21	\$35,594.51

FIBREGLASS TANK LIDS

Made from 100% pure fibreglass and resin with no fillers, our lids are available in 24" & 30" sizes to fit our line of fibreglass tanks. Lids with 8" clean-out lids are also available in both sizes.

ITEM #	DESCRIPTION	LIST PRICES		
		FOB MB	FOB SK	FOB AB
FG-CMLN-610	24" Fibreglass Lid	\$113.96	\$129.60	\$131.83
FG-CMLN-610-200	24" Lid w/ 8" Clean Out Lid	\$156.92	\$178.46	\$181.54
FG-CMLN-762	30" Fibreglass Lid	\$125.16	\$142.34	\$144.80
FG-CMLN-762-200	30" Lid w/ 8" Clean Out Lid	\$171.87	\$195.46	\$198.83



FIBREGLASS MAN-WAY EXTENSIONS

Our man-way extensions are available in two sizes, 24" & 30" diameter, and come in 12" intervals. Our man-way extensions are made from 100% Pure fibreglass and resin with no fillers.

ITEM #	DIMENSIONS		LIST PRICES		
	DIA	H	FOB MB	FOB SK	FOB AB
FG-CMEN610X305	24"	12"	\$102.75	\$116.85	\$118.86
FG-CMEN610X610	24"	24"	\$192.42	\$218.83	\$222.60
FG-CMEN610X915	24"	36"	\$267.14	\$303.81	\$309.05
FG-CMEN610X1220	24"	48"	\$354.95	\$403.66	\$410.62
FG-CMEN610X1525	24"	60"	\$425.93	\$484.40	\$492.75
FG-CMEN610X1830	24"	72"	\$465.16	\$529.01	\$538.13
FG-CMEN610X2140	24"	84"	\$506.26	\$575.75	\$585.68
FG-CMEN762X305	30"	12"	\$121.43	\$138.10	\$140.48
FG-CMEN762X610	30"	24"	\$198.02	\$225.20	\$229.08
FG-CMEN762X915	30"	36"	\$287.69	\$327.18	\$332.82
FG-CMEN762X1220	30"	48"	\$384.84	\$437.66	\$445.20
FG-CMEN762X1525	30"	60"	\$478.24	\$543.88	\$553.26
FG-CMEN762X1830	30"	72"	\$500.66	\$569.38	\$579.19
FG-CMEN762X2140	30"	84"	\$526.81	\$599.12	\$609.45



BONDING OF MAN-WAY EXTENSION TO TANK

Bonding of the man-way extension to the tank is a economical way to achieve a perfect "no seam" installation. You simply choose the height of the man-way extension required and our factory bonds it permanently to your tank, leaving you with one less thing to worry about on the job site.

ITEM #	DESCRIPTION	LIST PRICES		
		FOB MB	FOB SK	FOB AB
FG-CMENBOND610	BONDING 24" DIAMETER EXTENSION TO TANK	\$112.09	\$127.47	\$129.67
FG-CMENBOND762	BONDING 30" DIAMETER EXTENSION TO TANK	\$112.09	\$127.47	\$129.67



EF-4 EFFLUENT FILTER

The EF-4 series filter removes solids down to 1/16" and greatly extends the life of a septic system. The use of effluent filters are a provincial requirement in both Alberta and Ontario, making the EF-4 filter a great retrofit option! EF-4 Combo comes with both the filter and housing as well as a bushing for reducing the outlet from SCH40 to SDR35 pipe.

ITEM #	DESCRIPTION	LIST PRICE
EF-4 COMBO	EF-4 FILTER AND HOUSING	\$38.12

POLYETHYLENE TANK ACCESSORIES

Lids, fittings and riser extensions for our line of polyethylene tanks.

ITEM #	DESCRIPTION	LIST PRICE
60403	1-1/4" BULKHEAD FITTING	\$5.52
60124	1-1/2" BULKHEAD FITTING	\$8.45
420	1-1/4", 1-1/2", 2" COMBO GROMMET	\$7.84
416	3" GROMMET	\$12.84
413	4" GROMMET	\$17.98
63151	4" SDR35 SEPTIC ADAPTER	\$50.57
63152	4" SCH40 SEPTIC ADAPTER	\$54.80
60032	8" VENTED LID WITH RING	\$19.50
60038	16" VENTED LID WITH RING	\$30.01
63347	20" DOME TOP LID	\$40.46
41991	30" HOLDING TANK LID	\$171.57
EXT1-B	30" DIA X 12" RISER EXTENSION	\$119.00
EXT2-B	30" DIA X 24" RISER EXTENSION	\$198.68
62397	20" DIA X 15" H RISER EXTENSION	\$143.08
62396	20" DIA X 24" H RISER EXTENSION	\$122.14
62395	20" X 12" LID AND RISER	\$193.49
40981	CONCRETE BAFFLE REPAIR FORM	\$183.75
SDB-01	POLY DISTRIBUTION BOX	\$50.34
74512	4" FERNCO COUPLER	\$22.16
74411	3" FERNCO COUPLER	\$16.06





BELOW-GROUND FIBREGLASS TANKS: FOR RESIDENTIAL AND COMMERCIAL USE

FEATURES

The ZCL difference is in the quality and in the various features. ZCL underground tanks are all H-20 traffic rated, and will withstand the pressure of being submerged in water to grade while empty. Even more, ZCL tanks will stand up to both of these external factors simultaneously.

Additional options include CSA approval, an NSF 61 listing for potable water storage, burial depths beyond 20' and optional fitting and engineering packages.

ENGINEERING

When you choose a ZCL tank, you are getting a highly engineered and tested product that is corrosion resistant and built for you.

With tens of thousands of installations around North America, ZCL creates products that are built to last. Proprietary manufacturing techniques and unique standard features are what make ZCL tanks the choice of engineers, engineering consultants, project contractors and project owners.

TRANSPARENCY

ZCL is a publicly traded company in Edmonton, AB. They operate factories across North America in conjunction with their US subsidiary Xerxes Corporation, along with other subsidiaries including ZCL Dualam and Parabeam B.V.

When you buy a ZCL tank, you also buy a company with the vision to be the leading global provider of environmentally friendly liquid storage, fluid handling and corrosion resistant industrial products.

APPLICATIONS INCLUDE SINGLE & DUAL WALL:

- CSA approved
- NSF 61 listed potable water tanks
- Single and multi-compartment wastewater tanks
- Fire protection tanks
- Green building tanks

Contact one of our branches for more information on ZCL Composites Fiberglass Tanks.

ZCL®





CUSTOM PROJECTS: RESIDENTIAL AND COMMERCIAL

Polywest is a full service designer, supplier and installer of on-site water and wastewater systems in Manitoba, Saskatchewan and Alberta. Each of our locations is staffed by experienced personnel, certified by provincial governing bodies, to create long-lasting, effective and legal wastewater systems.

YOU CAN CHOOSE THE SCOPE OF OUR INVOLVEMENT:

1. **Supply Only** – you've got the design and will take care of the installation, all you need is the product
2. **Design and Supply** – we'll give you the blueprint and the product, but you supply the labour to install the system
3. **Design Only** – we'll put together a design that you can take to another installer or competent operator
4. **Design, Supply and Install** – we'll take care of everything

Polywest is a strong believer in the benefits of fiberglass and polyethylene tanks. In applications that require burial depths beyond 3' we believe that the only choice is fiberglass. Fiberglass offers an unmatched combination of strength and corrosion resistance. While we are the first to admit that installing a fiberglass tank is more involved than a concrete tank, the benefits of a lightweight fiberglass tank that can be delivered behind a pickup and will provide a lifetime of consistent service outweighs the relative ease of installing concrete.

**CONTACT ONE OF OUR BRANCHES FOR MORE
INFORMATION ON OUR RESIDENTIAL WATER AND WASTEWATER SYSTEMS.**

APPLICATIONS INCLUDE:

- Potable water storage
- Wastewater storage
- Rainwater storage and green applications
- Fire suppression
- Chemical and Corrosive Material Storage Tanks
- Process Vessels
- Potable Water Storage Tanks
- Fire Suppression Tanks
- Rainwater and Green Application Tanks

OPTIONS INCLUDE:

- Fiberglass or portable steel saddles
- Insulation
- Freeze Protection

TANK TYPES INCLUDE

- Sewage holding tanks to 12,000 gallons
- Two chamber septic tanks to 12,000 gallons
- Two chamber trickle tanks to 12,000 gallons
- Two chamber siphon tanks to 3,000 gallons
- Water cisterns to 12,000 gallons

ACCESSORIES INCLUDE

- NSF 40 advanced sewage treatment systems
- Field chamber systems
- Septic and potable water pumps
- High and low level alarms and gauges



INSULATED TANKS: PREPARING AND PROTECTING YOUR INVESTMENT AGAINST ALL WEATHER



An innovative freeze protection service that offers reliable no-freeze solutions and dependable products that work, no matter what the weather.

Polywest offers safe and economical freeze protection systems and heating cables that are used in every region of Canada and northern United States, as well as areas of extreme cold, such as Alaska and the Canadian Arctic. Our solution is one of the most advanced heating cable and water pipe freeze protection systems in North America, which uses conductive polymer self-regulating technology.

We provide:

- Heat-trace cable applications for pipes and tanks
- Heat tape applications to prevent frozen liquid systems
- Energy saving thermostat options
- Self regulating energy-efficient solutions



HOW DOES IT WORK?

Simply put, electric heat tracing is a system designed to keep your tank from freezing. Heat tracing works to preserve the temperature, increase the temperature or compensate for heat losses in pipes or storage vessels. The heat generated by the heating cable maintains a temperature to prevent freezing. Typically, trace heating involves an electrical heating cable that is placed around the tank, and then covered in thermal insulation to stop heat loss and retain the heat line system's temperature. Heating cables, or trace heating systems, offer a variety of freeze protection applications.



DID YOU KNOW?

All of our heating cable products are approved by the Canadian Standards Association (CSA) and certified to Canadian and USA standards, with appropriate field terminations factory installed.

TYPES OF PUMPS AVAILABLE:

SUBMERSIBLE SUMP PUMPS AND SYSTEMS

A sump pump is used in applications where excess rainwater or groundwater needs to be pumped away from a particular area. A sump pump sits inside a basin (also known as a sump) that collects this excess water.

EFFLUENT PUMPS AND SYSTEMS

An effluent pump is typically used in septic tank applications. Effluent is the gray wastewater that remains after the solids settle out.

SEWAGE PUMPS AND SYSTEMS

A centrifugal pump of special design, having impellers that can pump large pieces of solid matter without clogging.

GRINDER PUMPS / SYSTEMS

Liberty's grinder pumps meet the demanding needs of commercial and residential sewage applications where difficult solids-handling ability is crucial. They feature a superior cutting system made of hardened 440 stainless steel - Rockwell C 58, for shearing solids into small particles prior to being passed to the discharge by the impeller under high pressure. Applications include individual or groups of homes, motels, schools, shopping centres, lake front developments and systems requiring high pressure sewage pumping.

Liberty Pumps

INNOVATION. QUALITY. SERVICE.

Liberty Pumps, located in Bergen, New York (a rural Upstate community located near Rochester) was founded in 1965. As a privately held, family owned company, Liberty has grown to become a Rochester Top 100 Company and leading domestic manufacturer of sump, sewage and effluent pumps for the professional trade in North America.

Produced in an efficient lean manufacturing environment and ISO 9001 registered, Liberty's products are brought to life in a new, highly advanced facility. This facility is also home to the corporate offices, design and research labs, and manufacturing complex. With a strong team of dedicated members backing each area of the company, you can count on Liberty to bring you the best in pumping products.

PART NUMBER	DESCRIPTION	SERIES NAME	PUMP TYPE	PRICE
LB247-VMF / LB281-2	1/2 HP SUBMERSIBLE EFFLUENT/SUMP PUMP	240-SERIES	EFFLUENT/SUMP	\$282.88
LBS37	1/3 HP BUILDERS SERIES SUBMERSIBLE SUMP PUMP	S30-SERIES	SUMP	\$264.17
LB291-2	3/4 HP SUBMERSIBLE EFFLUENT/SUMP PUMP	290-SERIES	EFFLUENT/SUMP	\$662.77
LBLE41-A	4/10 HP SUBMERSIBLE SEWAGE PUMPS	LE40-SERIES	SEWAGE	\$644.07
LBLE51A-2	1/2 HP SUBMERSIBLE SEWAGE PUMPS	LE50-SERIES	SEWAGE	\$785.51
LBPRG101-A	PRG-SERIES RESIDENTIAL GRINDER PUMP	PRG-SERIES	GRINDER	\$2,046.76



**LIBERTY
PUMPS
IS AN
ISO 9001
CERTIFIED
COMPANY!**

ISO 9001 certification requires Liberty to demonstrate that its Quality System provides pumps that meet customer needs. It also aims to enhance customer satisfaction through continual improvement. At regular intervals Liberty Pumps Quality System undergoes a rigorous external audit by the multinational registrar Bureau Veritas Quality International.



240-SERIES SUBMERSIBLE EFFLUENT/SUMP PUMP

1/2 hp. 115V
1 1/2" Discharge
3/4" Solids Handling

The Liberty 280-Series provides a cost effective "mid-range" pump for on-site waste water systems, liquid waste transfer and commercial heavy-duty sump pump applications that require higher head or more flow. Designed around Liberty's unique "Uni-Body" casting, the 280-Series will provide years of reliable performance.

With a shut-off head of 37 feet and 3/4" solids-handling capability, the 280-Series by Liberty covers a wide-range of low-head to mid-range pump applications. Designed for STEP systems, mound systems, liquid waste transfer and high output sump applications, you can count on the 280-Series to offer superior performance. Designed with Liberty's unique one-piece cast iron body and quick-disconnect cords available in 10' and 25' lengths. 35' and 50' cords available on some models. High-output 1/2 hp submersible with rugged cast iron housing.



290-SERIES SUBMERSIBLE EFFLUENT PUMP

3/4 hp.
1 1/2" Discharge
3/4" Solids Handling

Features include Quick-disconnect 10' standard power cord allows replacement of cord in seconds without breaking seals to motor (other lengths available), permanently lubricated upper and lower bearings, oil-filled, hermetically sealed motors with thermal overload protection, stainless steel, removable bottom screen and rotor shaft, and stainless steel fasteners.



LE40-SERIES SUBMERSIBLE SEWAGE PUMPS

4/10 hp.
2" Discharge, 2" Solids Handling

Heavy-duty built and reliable, Liberty's LE40-series is the perfect choice for residential sewage applications. Featuring all cast iron construction with an epoxy powder coat finish, stainless steel fasteners, quick-disconnect power cord and a vortex style impeller for superior solids handling, the LE40-series combines solid performance with exceptional value.

LE50-SERIES SUBMERSIBLE SEWAGE PUMPS

1/2 hp.
2" Discharge, 2" Solids Handling

Sporting a new tough powder coat finish over heavy cast iron housings, Liberty's LE50-series is a commercial-grade workhorse for residential and light commercial sewage applications. Its efficient 1/2 hp motor with permanently lubricated bearings, stainless steel fasteners and quick-disconnect power cord design make this a favorite choice among plumbing professionals. Other features include a piggyback style switch on automatic models, 2" solids-handling ability and a shut-off head of 25 feet.

S30-SERIES BUILDERS SERIES SUBMERSIBLE SUMP PUMPS



1/3 hp.
1 1/2" Discharge
1/4" Solids Handling

The S30-Series from Liberty was designed to handle the problem areas of sump pumps in new home construction. Powered by a durable 1/3 hp motor, the S37 offers larger clearances around the impeller for better solids and debris handling. Features include:

- Quiet running, Heavy-Duty 1/3 hp motor.
- Dual ball bearings.
- Cast iron motor plate.
- High suction ports to reduce potential jamming.
- High capacity flow rates.
- Heavy-duty vertical style float switch.

PRG-SERIES RESIDENTIAL GRINDER PUMP

1 hp.
115V OR 230V
2" Discharge

Designed for residential sewage applications. Higher flow rates allow use with 2" discharge lines. Operates on standard 115 or 230 volt 20 amp circuits. PRG-Series residential grinders can be used as a replacement pump in 2" discharge systems using LE40 and LE50-series solids-handling pumps.* Features include:

- Heavy cast iron construction
- 15V or 230V single phase
- Patented V-Slice® cutter technology
- Shreds difficult solids that can jam a solids-handling style pump
- Hardened stainless steel cutter and plate
- Oil-filled, thermally protected motor



1/2HP SHALLOW WELL PUMP

For supplying fresh water to rural homes, farms and cabins. This pumps features a cast iron casing and seal plate for durability and long life. Dual voltage 120/230V also makes it adaptable to almost any application. Comes complete with 30-50 psi pressure switch and 100 psi gauge. Inlet: 1-1/4"; Outlet: 1"

MONARCH 1/2HP EFFLUENT PUMP

Monarch's 1/2 HP Effluent Pump is ideal for cottage or home applications where a submersible pump is not suitable. This pump can be mounted in a crawl space or basement for easy access. Made from heavy-duty cast iron and having a replaceable EPDM check valve, this pump offers years of worry free service.



PUMP TYPE	ITEM #	DESCRIPTION	LIST PRICE
Shallow Well	LG558274	1/2 HP Shallow Well Pump	\$501.26
Effluent	BE-50	1/2 HP Monarch Effluent Pump	\$730.11

PRESSURE TANKS

Ideal for home or cottage use, these pressure tanks make setting up a pressure system quick and easy. The 8.5 Gallon model comes complete with a stand and mounting plate for a jet pump.



ITEM #	DESCRIPTION	LIST PRICE
WA25S	8.5 GALLON PRESSURE TANK W/ STAND	\$164.98
WA60	20 GALLON PRESSURE TANK	\$322.80
WA120	33.4 GALLON PRESSURE TANK	\$613.32

**PRG-Series flow rates do not exactly match LE-series flow rates. Consult factory with actual application and head specifications prior to replacing LE40 and LE50 series pumps.*

HIGH & LOW LEVEL ALARMS

Used for both wastewater and fresh water tanks to alert of either a high or a low level of liquid.

Liberty Pumps



Liberty's ALM-2 Indoor High Liquid Level Alarm is ideal for sump, effluent or sewage applications.

Offers a Nema 1 indoor rating. Also available with an autodialer for when you are on vacation or just away from home - system will notify you right away and will dial up to four numbers sequentially. Unit also comes complete with float switch.



Sentry's Liquid Level Alarm monitors water levels in cisterns, sumps, septic systems, holding tanks, pump chambers, trucks, water treatment plants or storage tanks. Installation is as simple as suspending the probe at the desired alarm level.

Unique Digital RF technology measures the water level through plastic coatings on the probes or sensors. Alarm a HIGH or LOW level condition. Control equipment with the optional relay.

Additional features include:

- 115V operation with 9 volt battery back-up, with low battery chirp
- 86 decible alarm (horn)
- Float switch activated panel with an 88 dB horn and warning light to indicate a high water condition.
- Easy installation - plugs into a 115V outlet.
- Float included with a 20' cord, ALM-2-1 available with 10 'cord.
- Red alarm light and Green "power-on" light
- Automatic reset, with Test / Silence feature

Features include:

- Indoor alarm display with auto reset audible alarm
- HIGH or LOW function selectable
- Digital RF probe, 15m (50') standard
- Continual self-test that probe functioning correctly
- Unit complete with all wiring
- Custom probe cable lengths available
- No limit to transmission distance

WIRELESS HIGH LEVEL ALARM

Monitor the water level in pump chambers, cisterns, holding tanks, sumps or truck tanks. The indoor digital display indicates the depth of water in feet or meters or percent. HIGH and LOW level alarm points and pump control ranges are programmed using the display. An audible alarm with silence and auto reset can be used to warn of an alarm condition. Four relay outputs can be configured to operate pumps, remote alarms, security systems or other control applications. The sensor rests, vertically, on the bottom of the tank and is tethered at the top.

Features indoor digital display of water depth, digital RF sensor with +/- 3/8" resolution throughout span, configurable HIGH and LOW alarm points and four control relays, audible alarm auto reset, self diagnostic functions, outdoor junction box, and standard sensor length 1.5m (5 feet).



ITEM #	DESCRIPTION	LIST PRICE
ALARM-HIGH	LIBERTY HIGH LEVEL LIQUID ALARM	\$199.88
ALARM-LOW	LIBERTY LOW LEVEL LIQUID ALARM	\$199.88
ALARM-WIRELESS	AQUATIC SENTRY WIRELESS HIGH LEVEL ALARM	\$539.50
91-100	AQUATIC SENTRY ALARM WITH PROBE	\$206.24

FLOAT SWITCHES

Float switches for use with submersible sump and effluent pumps. Each switch comes with a float weight to set the switch height for your particular application.

ITEM #	DESCRIPTION	LIST PRICE
PIL-5D	5 METER FLOAT SWITCH	\$131.17
PIL-10D	10 METER FLOAT SWITCH	\$138.22
PIL-15D	15 METER FLOAT SWITCH	\$148.82
PIL-23D	23 METER FLOAT SWITCH	\$212.67
PIL-32D	32 METER FLOAT SWITCH	\$243.52
MFC-10M	10 METER MERCURY FREE SWITCH	\$148.92

INFILTRATOR - QUICK4® EQUALIZER® 36 CHAMBERS

The evolutionary patent-pending Quick4® Equalizer® 36 Chamber fits in a 24" wide trench and is ideal for curved or straight systems.

It features the patent-pending Contour Swivel Connection™ which permits 15-degree turns, right or left. The MultiPort™ end cap allows multiple piping options and eliminates pipe fittings. The chamber's four-foot length provides optimal installation flexibility.



ITEM #	DESCRIPTION	DIMENSIONS			LIST PRICE
		L	W	H	
EQ36Q4	QUICK4® EQUALIZER® 36 CHAMBER	48"	22"	12"	\$46.63
EQ36Q4-CAP	QUICK4® EQUALIZER® 36 MULTIPORT™ END CAP	18"	22"	12"	\$28.65
Q4 + STDLP	QUICK4® PLUS STANDARD LOW PROFILE	48"	34"	8"	\$58.94
Q4 + A1E	QUICK 4® PLUS ALL-IN-ONE END CAP				\$25.35



PVC DRAINLINE PIPE

Standard PVC Drainline Pipe, available in 3" & 4" sizes in both solid and perforated. Comes in 10' lengths.

ITEM #	DESCRIPTION	LIST PRICE
76501	3" SOLID UTILITY DRAINLINE PIPE - 10'	\$12.81
76502	3" PERFORATED UTILITY DRAINLINE PIPE - 10'	\$12.81
76503	4" SOLID UTILITY DRAINLINE PIPE - 10'	\$22.70
76504	4" PERFORATED UTILITY DRAINLINE PIPE - 10'	\$25.00

ITEM #	DESCRIPTION	LIST PRICE
76002	1" - 75 PSI POLY PIPE - 300' ROLL	\$282.00
76003	1" - 75 PSI POLY PIPE - 100' ROLL	\$94.00
76004	1" - 100 PSI POLY PIPE - 300' ROLL	\$417.00
76005	1" - 100 PSI POLY PIPE - 100' ROLL	\$139.00
76007	1-1/4" - 75 PSI POLY PIPE - 300' ROLL	\$513.00
76008	1-1/4" - 75 PSI POLY PIPE - 100' ROLL	\$171.00
76009	1-1/4" - 100 PSI POLY PIPE - 300' ROLL	\$720.00
76010	1-1/4" - 100 PSI POLY PIPE - 100' ROLL	\$240.00

POLYPROPYLENE PIPE

75 psi (Red) and 100 psi (Green) water or effluent line. Comes in 100' and 300' rolls as listed, no cut lengths.



WESTLAND SUMP PITS

LOADED WITH INNOVATIVE FEATURES TO GUARANTEE YEARS OF SERVICE, INCLUDING:

1. Precut cord and discharge pipe holes with supplied grommets
2. Sealed HDPE lid with neoprene gasket
3. Stainless steel hardware
4. Anti-flotation flange to lock the tank into the floor slab
5. Octagonal design gives multiple locations for weeping tile inlets and adds structure to the tank



ITEM #	DESCRIPTION	CAPACITY		WEIGHT (LBS)	LIST PRICES	
		IMP GAL.	LTR		FOB MB	FOB SK/AB
SP-01OCT	18" X 30" OCTAGONAL SUMP PIT	27	123	13	\$74.00	\$79.00
SP-02OCT	30" X 30" OCTAGONAL SUMP PIT	75	341	25	\$105.00	\$112.00
SP-03OCT	23" X 30" OCTAGONAL SUMP PIT	45	205	16	\$91.00	\$97.00
SP-03	21" X 30" ROUND CMHC APPROVED SUMP PIT	45	205	16	\$83.00	\$88.00

SUMP PITS & SEWAGE LIFT STATIONS

Our sump pits are made of high-density polyethylene and serve to collect excess water from under your basement floor and foundation walls. We offer a variety of sump pits and building codes may dictate which pit is required in your area. Your plumber or foundation contractor will be the expert to consult with for which type of sump pit and pump to use.

ITEM #	CAPACITY		DIMENSIONS		LIST PRICES	
	IMP GAL	LTR	L	H	FOB MB	FOB SK/AB
41239-SP	112	509	33" Dia.	42"	\$266.03	\$384.64
41017-SP	154	700	33" Dia.	57"	\$312.57	\$334.44
41018-SP	241	1096	33" Dia.	91"	\$498.76	\$533.67



RIBBED CYLINDRICAL TANKS

Made from the same rugged high-density polyethylene as our sump pits, these tanks can be fitted with numerous types of lids and fittings to suit your application. The heavy duty ribbed design makes this line of tanks one of the most durable available on the market.

ITEM #	CAPACITY		DIMENSIONS		LIST PRICES	
	IMP GAL	LTR	DIA	H	FOB MB	FOB SK/AB
41239	112	509	33"	42"	\$232.75	\$249.04
41017	154	700	33"	57"	\$279.29	\$298.84
41018	241	1096	33"	91"	\$465.48	\$498.07

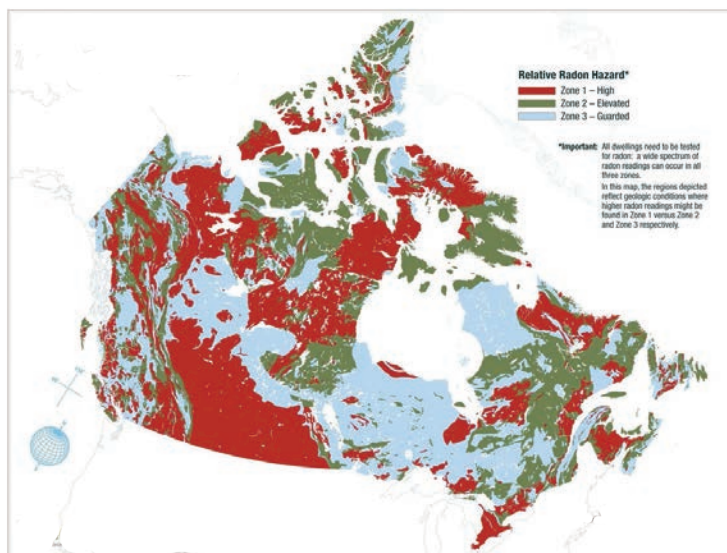


RADON MITIGATION SYSTEM

Did you know that in Western Canada alone, over 30% of homes are currently thought to exceed the accepted daily limits of radon? It is because of this risk, that Polywest also offers a complete radon remediation system, utilizing the innovation of the Saber Sump Pit.

Radon mitigation is the process used to reduce radon gas concentrations in the breathing zones of occupied buildings. This is accomplished through the installment of a relatively straight-forward ventilation system, with involves forcing the gas to collect below a concrete floor slab or membrane on the ground, and then removing it from the home using a fan and a vent pipe.

In collaboration with **Liberty Pumps** and **Fantech**, we have developed a simple and cost effective system that utilizes your existing sump pit system and makes it part of an effective radon remediation solution. We will work with you, from the initial testing through to the final installation, to ensure your house is safe for you and your family. Call us today for more information on this program.



fantech

Liberty Pumps

WHAT IS RADON, AND WHY YOU SHOULD BE CONCERNED:

Radon is a radioactive gas found naturally in the environment. Produced by the decay of uranium found in soil, rock or water, radon is invisible, odorless and tasteless, and emits ionizing radiation. As a gas, it moves freely through the soil enabling it to escape to the atmosphere or seep into buildings.

When radon is confined to enclosed or poorly ventilated spaces, it can accumulate to high levels – causing a significant increase in the potential for the development of lung cancer. *Radon is the second leading cause of lung cancer, after smoking, and homeowners should take appropriate action to reduce their levels.*

Not everyone exposed to radon will develop cancer. The time between exposure and the onset of the disease is usually many years. Unlike smoking, occasional exposure to radon does not produce any symptoms, such as coughing or headaches. Your risk of developing lung cancer from radon depends on the concentration of radon in the air you breathe and the length of time you are exposed. If you are a smoker also exposed to elevated levels of radon, then your risk of lung cancer is significantly increased.

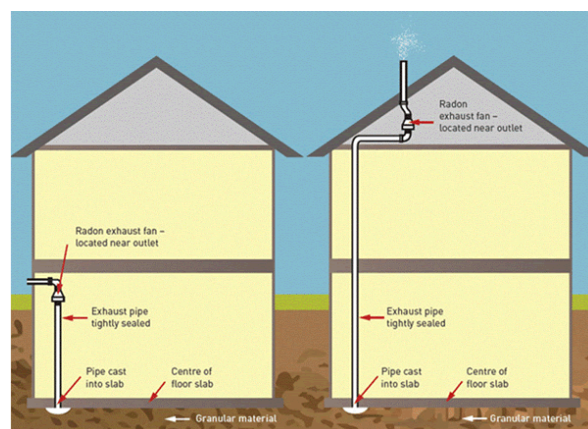
HOW TO TEST FOR RADON:

Radon test devices can be purchased by phone or over the internet and are available at some home improvement retailers across Canada. You can also hire a certified radon measurement professional to test your home.

HOW TO FIX YOUR RADON ISSUE:

The most common radon reduction method is called active sub-slab depressurization. This method involves inserting a pipe through the foundation floor slab into your homes sump pit or the granular material underneath the home. The pipe can be vented in one of two ways, but in both cases the fan draws the radon from below the home and releases it into the outdoor air before it can enter the home, significantly reducing the amount of radon in the home:

1. Extended to an outside wall at ground level, with a radon exhaust fan attached that is located near an outlet for power supply.
2. Extended up through the house to the roof with the exhaust fan attached to the pipe in the attic of the home near an outlet for power supply.



ECOPOD-N[®]



The Clear Choice For Onsite Wastewater Treatment

Certified to
NSF/ANSI Standards 40 & 245

ECOPOD-N is a NSF 40 certified, fixed film advanced treatment system that combines Horizon tanks with an advanced treatment system inserted into an Infiltrator injection molded poly tank.



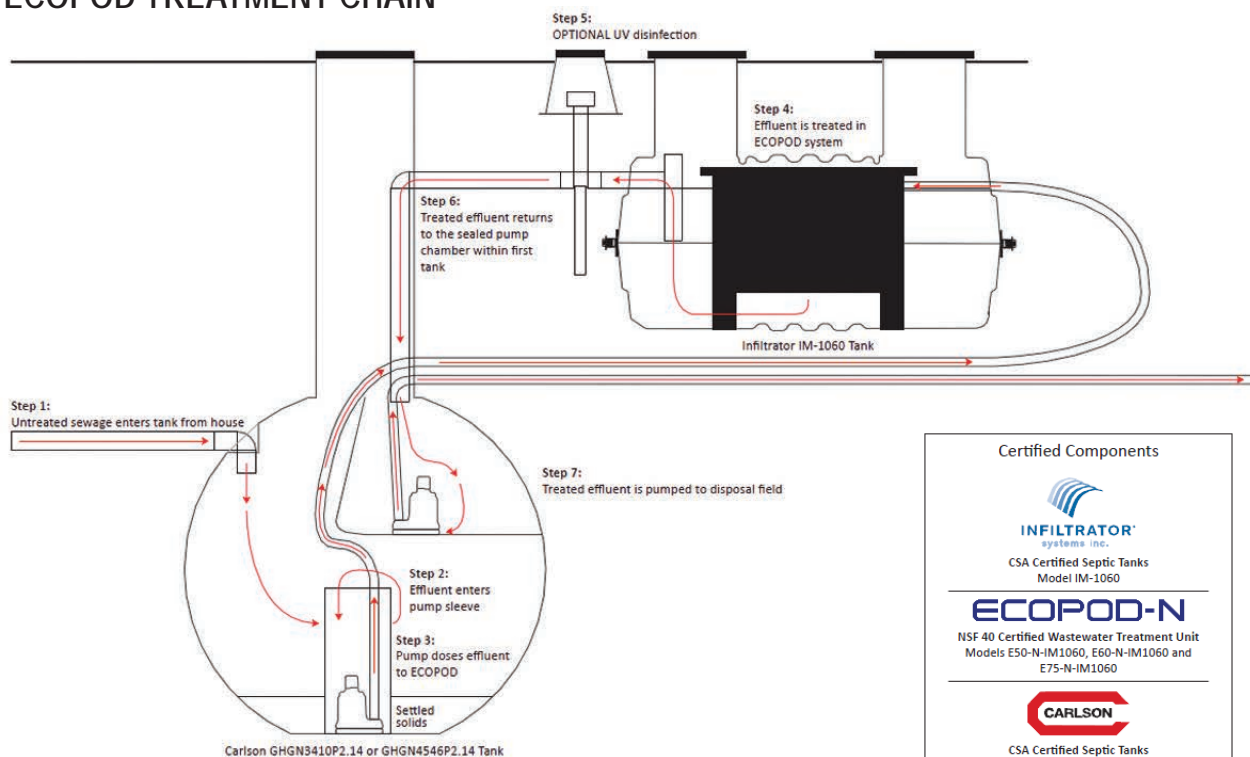
In the ECOPOD, untreated sewage drains from the home or business into a Horizon 1000 gallon settling tank much like what occurs in a conventional septic tank. From there, the settled effluent is pumped to the Infiltrator tank and onto the proprietary media that makes up the ECOPOD. An advanced treatment system traditionally utilizes aerobic bacteria to treat effluent to a stage well beyond a conventional septic tank. In the ECOPOD media that provides enough surface area to house an overpopulation of aerobic bacteria that breaks down sewage, making it safe for release into the environment. This process results in a reduction of nitrogen, BOD, TSS, fecal cloriforms and nutrients in the wastewater. In layman's terms this means what started as untreated wastewater is transformed to a liquid similar to greywater. Further treatment options, including UV filters, can further clarify the treated effluent. Treated wastewater then gravity feeds into a sealed pump chamber housed in the original septic tank where a second pump moves the liquid to a field or mound for disposal.

WHY GO WITH AN ECOPOD SYSTEM?

ECOPOD is certified under Standard 40 & 245 of ANSI/NSF International as a Class 1 system, meaning it is approved for use across Western Canada. It utilizes a fixed film process which is characteristically stable, reliable and sturdy. This process is preferable to an ATU system that does not use media and is prone to failure when unusual amounts of sewage enters the system. Advanced treatment systems are an effective way to rejuvenate a failed septic field or mound and are often less expensive than a costly disposal system rebuild.

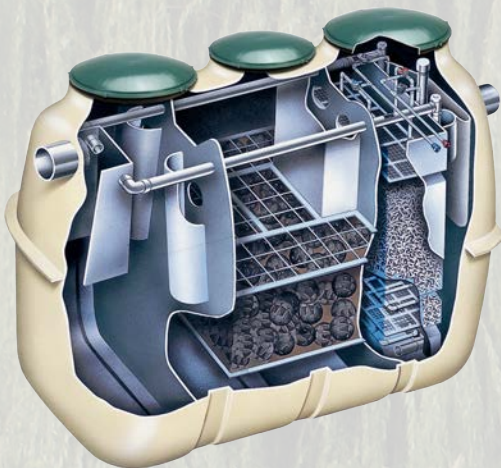
While the ECOPOD is more expensive than a conventional septic tank, it is less expensive than comparable advanced treatment systems and it becomes an affordable choice in areas where the only options for septic systems are advanced treatment or holding tanks. Think of it as a less expensive version of "the best". All components of the ECOPOD are either CSA or NSF certified.

THE ECOPOD TREATMENT CHAIN



ZOELLER[®] ***FUSION***

ADVANCED TREATMENT SYSTEM

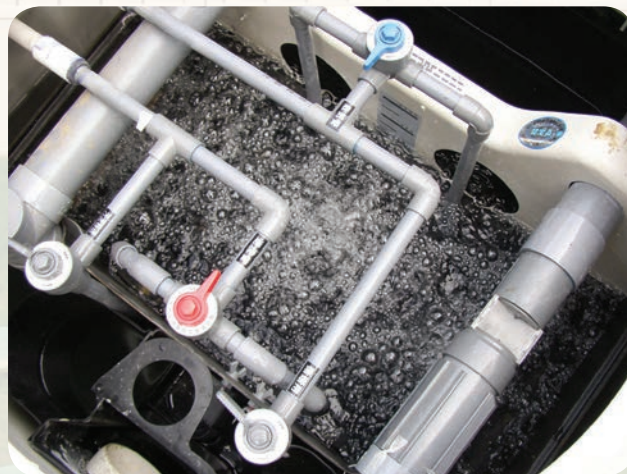


Utilizing Japanese technology (Jokaso), which has been used since 1969, the Fusion Advanced Treatment System has been refined over the last 40 years to optimize the treatment of residential waste.

Recognized as one of the best Advanced Treatment Systems on the market, the Zoeller Fusion Series is the best option for today's residential or cottage wastewater treatment needs. Units are available that can handle up to 5 bedroom homes and cottages.

Key features include:

- All materials found in the septic environment are noncorrosive.
- Systems are compact and efficient
- Designed to be installed or retrofitted easily into a typical residential or commercial environment.
- Easy to maintain with proven technology



Contact your nearest Polywest
branch location for more information!

Winnipeg	204.924.8265
Saskatoon	306.956.7788
Edmonton	780.960.0725



West-X LOGISTICS

We're moving products to you faster and
more efficiently than ever before.

POLYWEST - A BRIEF HISTORY

Originally created in 1991 as the distributing division for polyethylene tanks for a major Winnipeg-based plastics manufacturer, Polywest Ltd separated from its parent company in 1995, to incorporate as a private company. Opening an independent location in Winnipeg gave Polywest the ability to concentrate on marketing a synergistic line of liquid handling products to agricultural and industrial markets. The objective was to offer main line products at a fair price, on a timely basis and with a degree of product knowledge customers could trust.

Within three years, Polywest grew significantly, and established itself as a leading supplier of quality liquid handling products in Canada. By building strong professional relationships with industry leading liquid handling companies, Polywest earned their support and confidence in bringing these products to the market at a price that promotes continued growth.

Strategic acquisition has played a key role in the growth and success of Polywest. After acquiring the equipment of GreenDrop in 1996, Polywest undertook a substantive effort to take an industry

accepted product line and evolve it to meet the changing liquid fertilizer market. Those changes have made Polywest the leader in liquid fertilizer application equipment not only in Canada, but also globally with significant product sales in the USA, Europe and Australia.

In 1999, Polywest acquired the marketing and distribution rights of a below ground septic and holding tank product line to compliment its above ground polyethylene storage tanks. With the addition of Norwesco Water and Waste products, Infiltrator Systems septic chambers and Carlson Structural Glass fiberglass septic tanks, Polywest Ltd. became the most complete supplier of above and below ground storage and hauling tanks in Canada.

In 2011, Polywest Ltd. acquired Focus Industries Inc. and with it gained the exclusive marketing and manufacturing rights to The Handler, along with distribution rights for complimentary, high quality products such as Banjo, Green Leaf and ZCL Composites.

The company evolution continued in 2013

with the acquisition of Westland Plastics, a successful 30 year old manufacturer of high quality rotationally molded plastic products. Westland's products are sold into a wide variety of industries including agriculture, water, wastewater, marine, recreational vehicle and industrial. 2013 also marked the creation of our own shipping company, West-X, as well as the completion of a new 50,000 square foot Winnipeg Head Office and Distribution Centre. As a result, the Polywest business group now operates in three major Canadian centres with the ability to distribute and ship its products to any of its points within 24 hours.

In 2014, Polywest has continued to evolve. First, with the sale of our Prairie Pride line, giving Polywest the ability to better focus on our core competencies. Secondly, the full transition of Westland Plastics into the Polywest brand and the installation of a new rotomolding machine in our Winnipeg facility. As a result of these combined events, Polywest is now better equipped to serve both its customers and dealers, and is excited for what the future holds.

www.polywest.ca

**mix it
move it
store it**

1.855.765.9937

SASKATCHEWAN

110 - 3240 Idylwyld Drive N
Saskatoon, SK S7L 5Y7

Phone 306-956-7788
Fax 306-956-7787

MANITOBA - HEAD OFFICE

Unit B, 3700 McGillivray Blvd
Winnipeg, MB R3T 5S3

Phone 204-924-8265
Fax 204-254-3000

ALBERTA

103, 2-26302 TWP RD 531A
Acheson, AB T7X 5A3

Phone 780-960-0725
Fax 780-960-2503